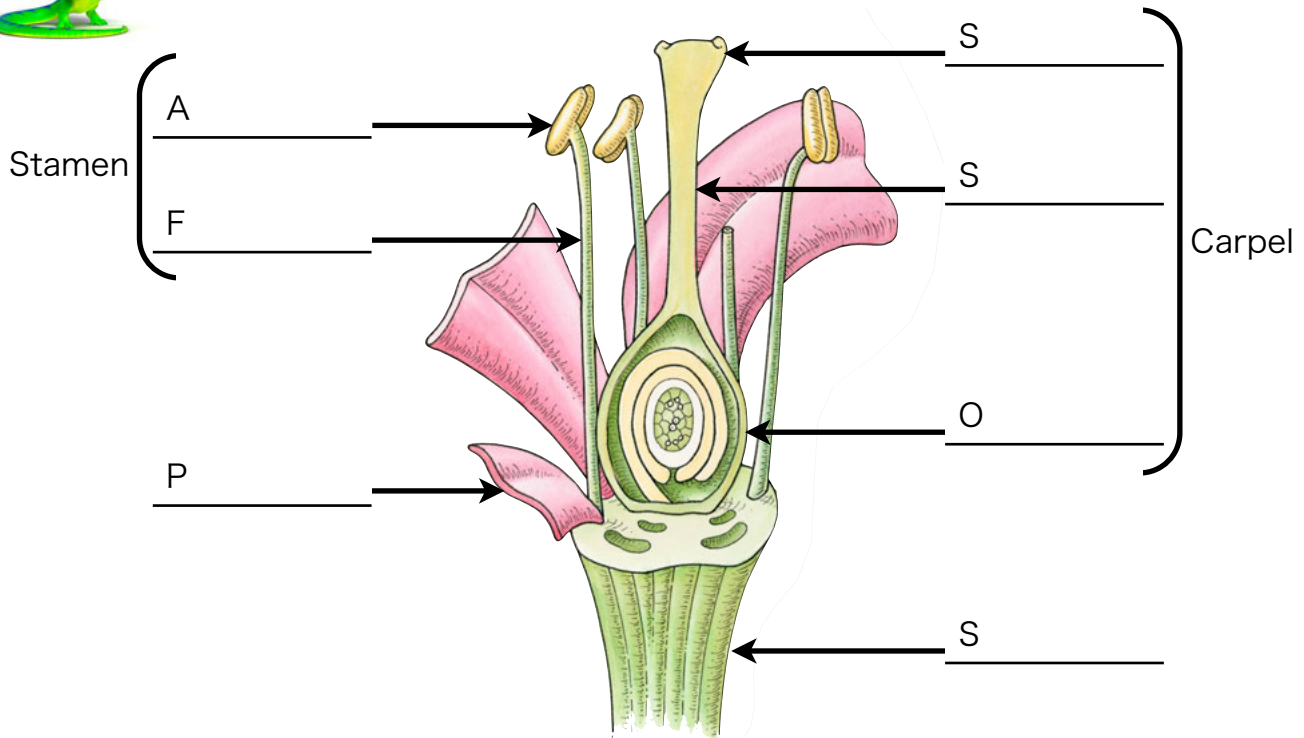


Name: _____ Date: _____



Use the Word Bank to help you label the flower diagram below.
Then, circle the correct words in the description.

**Word Bank**

Petal Anther Style Filament
Stem Stigma Ovary

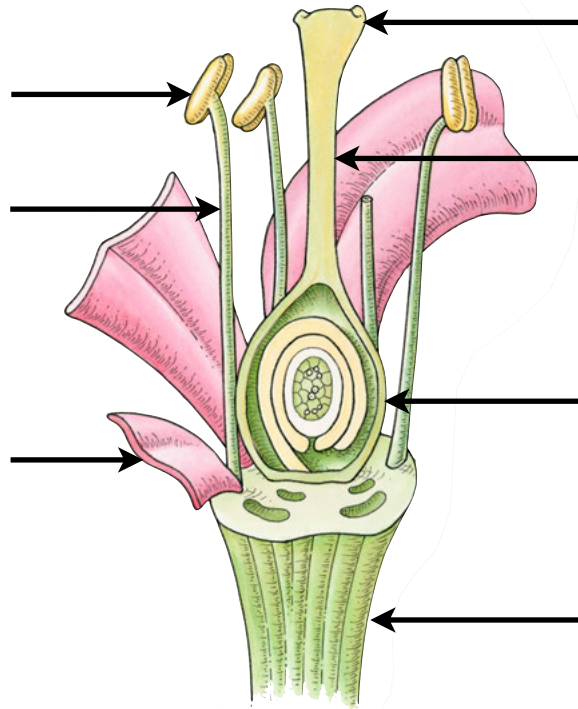
The stamen is the male / female part of a flowering plant. Pollen grains grow on the filament / anther. During pollination, pollen grains are usually transferred from one flower to the carpel of another. The carpel is the male / female part of a flowering plant. Pollen grains stick to the stigma / petals. Pollen tubes grow down the style. A tiny package of genetic information travels down the pollen tube to the stem / ovary, where it combines with an egg cell; a seed begins to grow.

Name: _____ Date: _____



Use the Word Bank to help you label the flower diagram below.
Then, write a description of the male and female parts.

Stamen



Carpel

Word Bank

Petal

Anther

Style

Filament

Stem

Stigma

Ovary

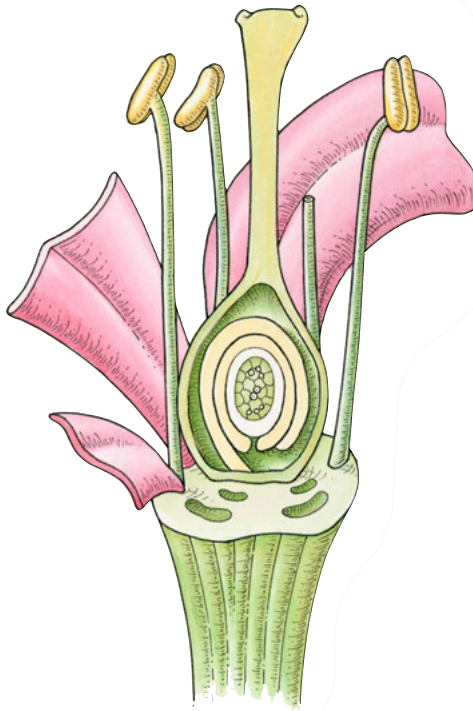
The stamen _____

The carpel _____

Name: _____ Date: _____



Use the Word Bank to help you label the flower diagram below.
Then, write a description of the male and female parts.

**Word Bank**

Petal

Anther

Style

Filament

Stem

Stigma

Ovary

The stamen _____

The carpel _____

Name: _____ Date: _____



1. Cover the square in the middle of the page with double-sided sticky tape.
2. Carefully dissect a flower using your fingers or tweezers, then attach the pieces to the sticky tape.
3. Cover the dissected flower with sticky-backed plastic or regular sticky tape.
4. Use the Word Bank to help you label the dissected flower.



Word Bank

	Petal	Anther	Style	Filament
Stem	Stigma	Ovary	Sepal	

How many sepals did your flower have?

How many petals did your flower have?

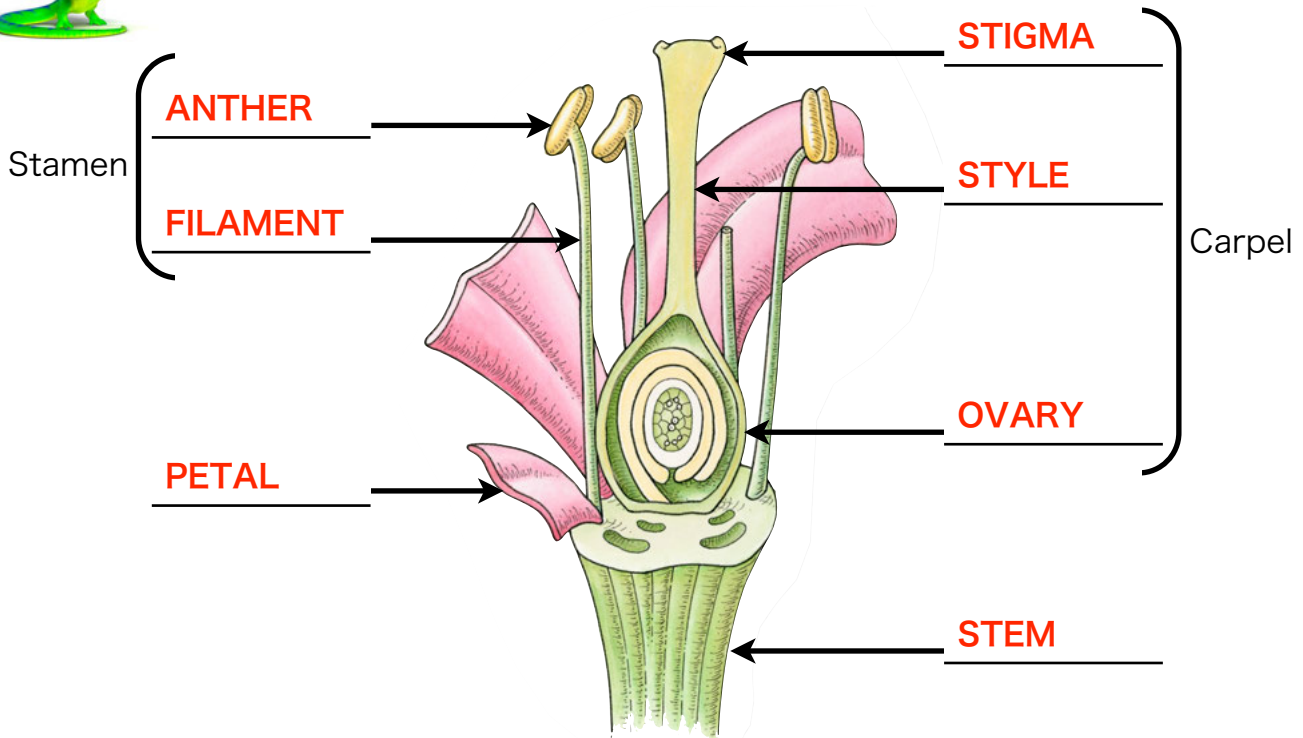
How many stamens did your flower have?

If your flower has a large carpel, ask your teacher to help you cut it open. What can you see?

Name: _____ Date: _____



Use the Word Bank to help you label the flower diagram below.
Then, circle the correct words in the description.



Word Bank

Petal

Anther

Style

Filament

Stem

Stigma

Ovary

The stamen is the **male** / female part of a flowering plant. Pollen grains grow on the filament / **anther**. During pollination, pollen grains are usually transferred from one flower to the carpel of another. The carpel is the male / **female** part of a flowering plant. Pollen grains stick to the **stigma** / petals. Pollen tubes grow down the style. A tiny package of genetic information travels down the pollen tube to the stem / **ovary**, where it combines with an egg cell; a seed begins to grow.