



Norbert the Norwegian
Ridgeback Read Chapter 13

Learning Objectives

By the end of the lesson you will...

- ✓ To infer from the text.
- ✓ To write a poem using simile and metaphor.



Comprehension

Answer the following questions in full sentences in your exercise book. Use evidence from the text to support your answers:

1. Why does Hagrid shush the children? Pg 247
2. Why does Hermione flatter Hagrid? Pg 249
3. Why does a wooden house bode badly for Hagrid? Pg 251
4. Why will they need to use the invisibility cloak to move Norbert? Pg 255
5. Why is Ron dubious about going to the infirmary? Pg 256
6. What happens to Malfoy? Pg 258



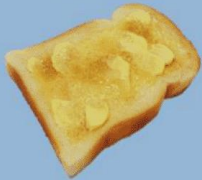
Extension Task:

Write a poem about the creature you created for 'Fantastic Beasts & Where To Find Them'.

Similes

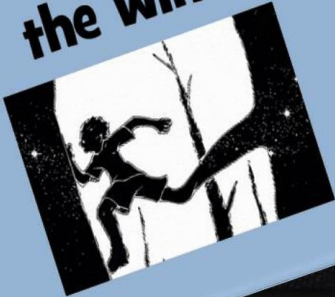
What are Similes?

**She felt as
warm as toast.**



What are Similes?

**The boy ran like
the wind.**



➤ **A simile is a figure of speech that makes a comparison, showing similarities between two different things.**

➤ **A simile is a direct comparison and uses the word 'like' or 'as' in the comparison.**

Metaphors

What are Metaphors?

This metaphor says that the exam **was** a walk in the park. It implies that the exam was as stress free as a walk in the park. It was easy!

The exam **was** a walk in the park.

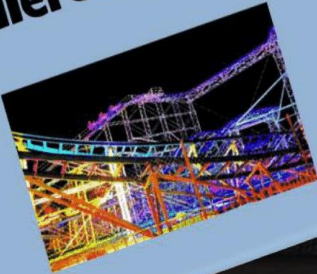


- A metaphor also makes comparisons between objects. However, a metaphor does not include the words 'like' or 'as' in the comparison.
- Metaphors are more subtle than similes. In a metaphor the words 'is' or 'was' are often used.

Metaphors continued

What are Metaphors?

**Life is a
rollercoaster!**



This metaphor compares life with a rollercoaster. It says life **is a roller coaster. It has its ups and downs and can be scary and yet exciting. Much is conveyed in a few words.**

The Difference -

The difference between similes and metaphors can be shown by similar lyrics from two different songs.

Life is a Highway.
This is a metaphor. The words 'like' or 'as' are not used.

"Life is a Highway" (Tom Cochrane)

My heart is like an open highway. This is a simile. The word 'like' is used in direct comparison.

"My heart is like an open highway"
(Bon Jovi)



Simile and Metaphor

“The Highwayman” by Alfred Noyes contains a metaphor and two similes in the same verse. Can you identify them?



**“His eyes were hollows of madness,
His hair like mouldy hay.
But he loved the landlord’s daughter,
The landlord’s red-lipped daughter.
Dumb as a dog he listened,
And he heard the robber say.”**

“The Highwayman” by Alfred Noyes

Answers

“His eyes were ‘hollows of madness’” is a metaphor. “Hair like mouldy hay” and “dumb as a dog” are similes.



“His eyes were hollows of madness,
His hair like mouldy hay”
But he loved the landlord’s daughter,
The landlord’s red-lipped daughter.
Dumb as a dog he listened,
And he heard the robber say.”

“The Highwayman” by Alfred Noyes

Dragon Poetry

Draw your own dragon and create a poem to describe it.

My New Pet.

My new pet is a curious kind.
It erupted from an egg and blew my mind.
With fiery eyes and savage claws
And razor sharp teeth filling its jaws.
Enormous wings like leathery sails,
Scaly armour and a lethal dagger tail,
Roaring and huffing and coughing out fire,
To eat you for dinner is all it desires.
It's not a snake, or a lizard, or bat ...
My pet is a DRAGON!



My poem contains a simile and a metaphor - I have highlighted them for you. Challenge yourself to include these language features in your poem.