

# Making patterns with shapes



1 Draw the next two shapes in each pattern.

a)

b)

c)

d)

2 Tick the missing shape for each pattern.

a)

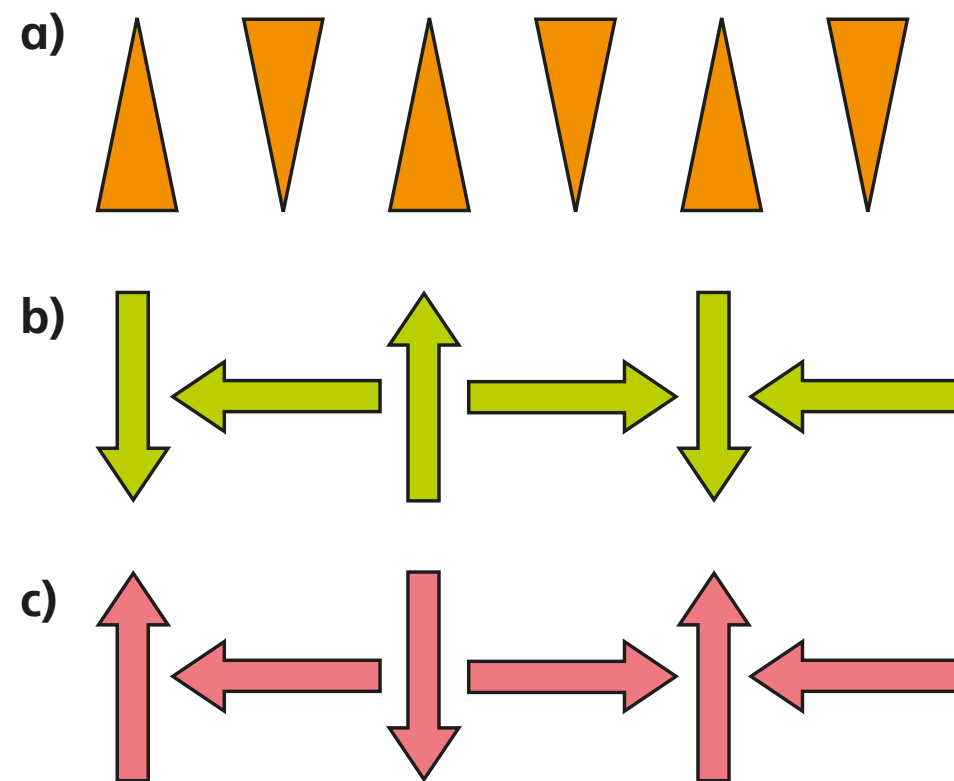
b)

c)

What is the turn in each pattern?  
Talk about it with a partner.



3 Describe the turn in each pattern.



4 Tommy is describing a pattern.

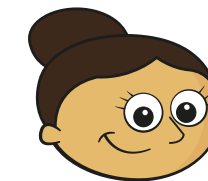
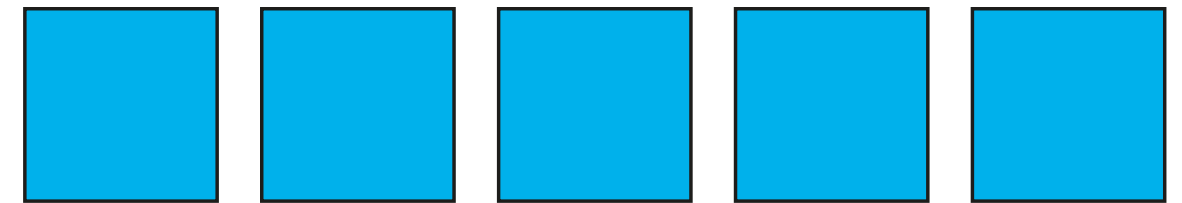
The first shape is a triangle and it turns a quarter turn clockwise each time.



Draw the first five shapes in Tommy's pattern.

Compare answers with a partner.

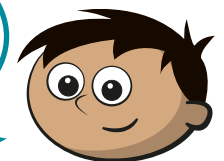
5 Dora, Eva, Amir and Ron are describing a pattern.



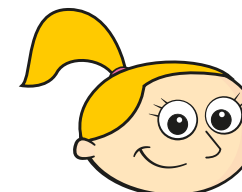
Dora

The square does not turn at all each time.

The square turns a quarter turn each time.



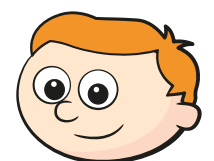
Amir



Eva

The square turns a half turn each time.

The square turns a three-quarter turn each time.



Ron

Who do you agree with? \_\_\_\_\_

Talk about it with a partner.