

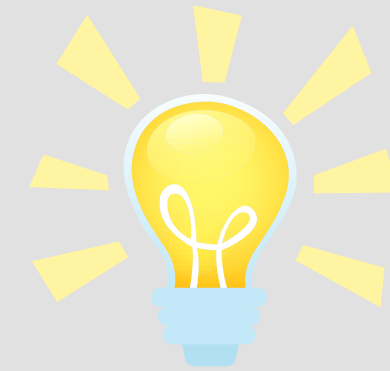
World War I

Learning Objective:

To investigate elements that led to the start of World War I.

Next

Think, pair, share...
What do you already know about WWI?



Have you read
any books set during
this war?

Do you know any
key dates from this
war?

Back

Next



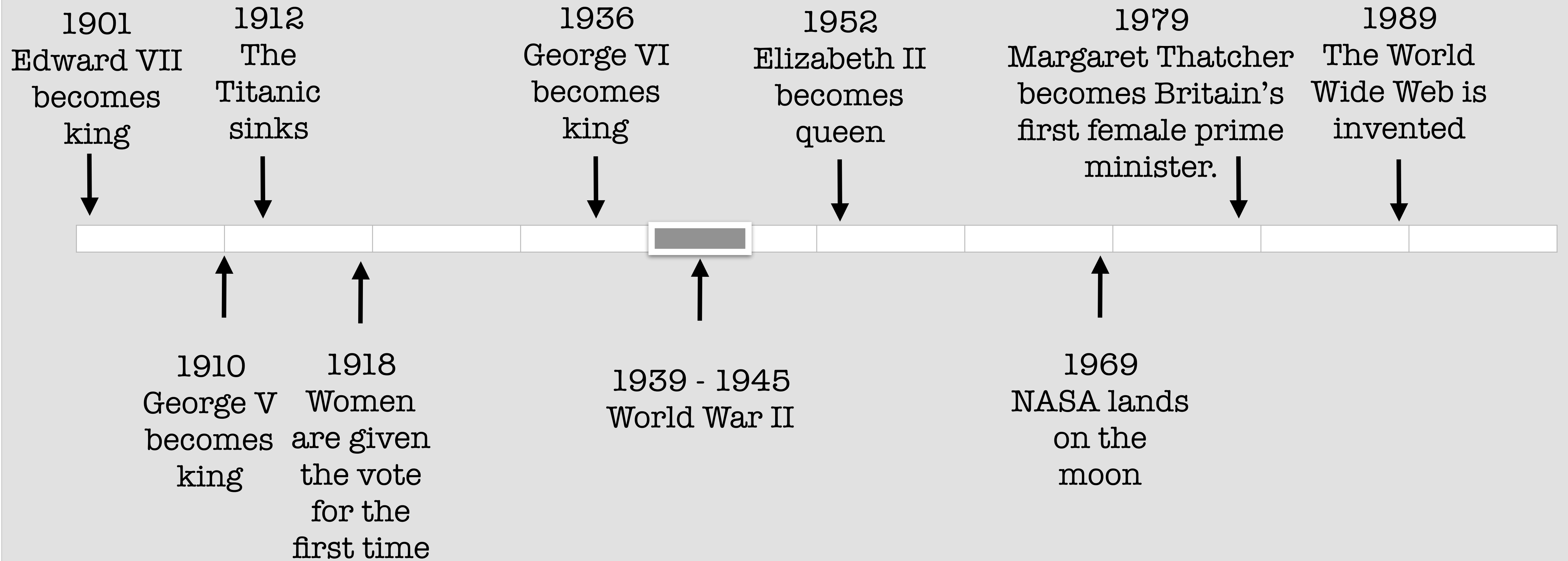
WWI



Back



Next

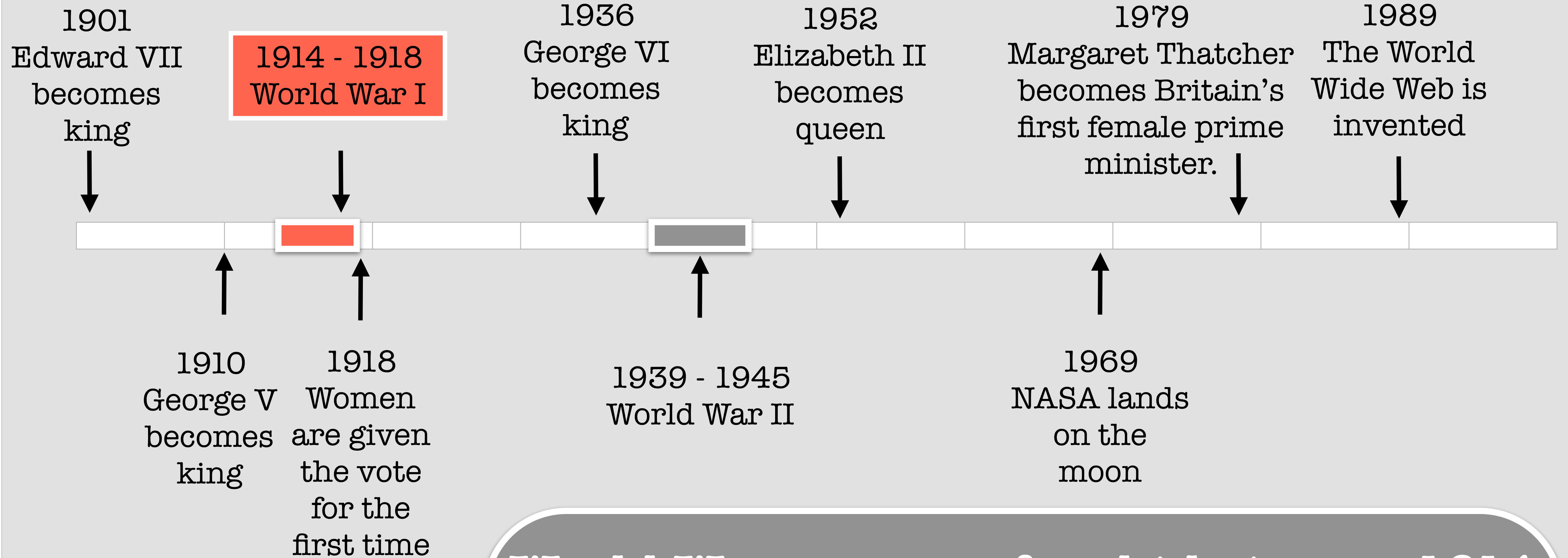


Where would World War I be on this timeline?

Back



Next



World War one was fought between 1914 and 1918. At the time, people called it 'The Great War'. There hadn't been a war of this scale before.

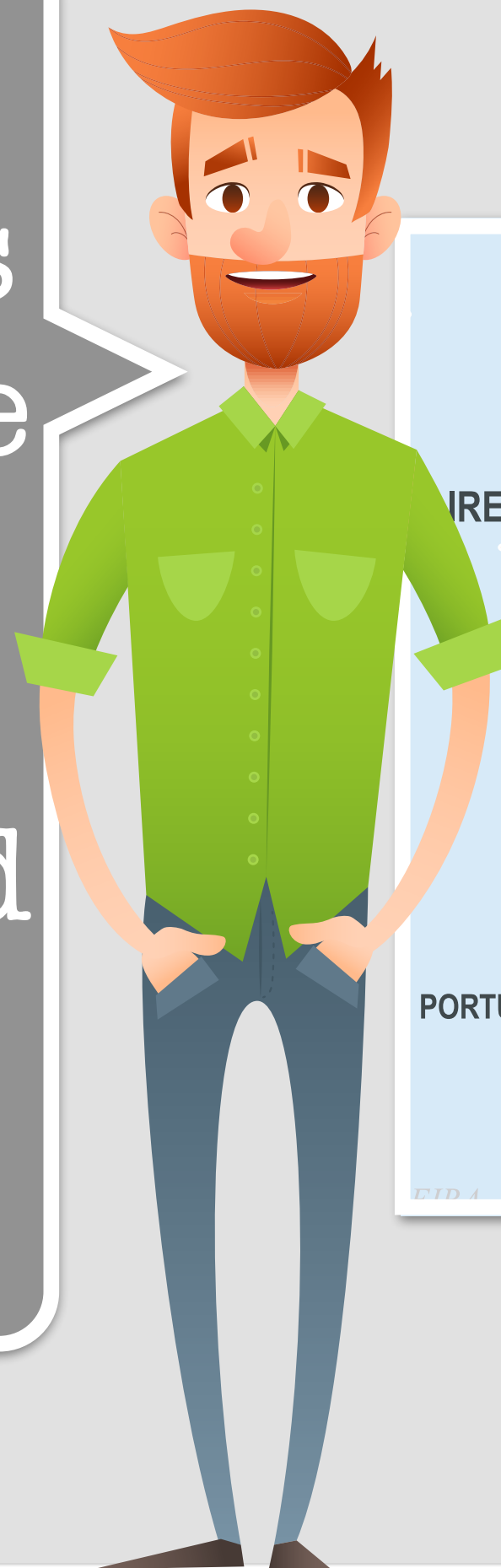


Back

Next

Before the war had even started, many leaders knew that it was coming. Tensions were high between countries in Europe and many had formed alliances.

What differences can you see between 1914 Europe and modern Europe?



Modern Europe



1914 Europe



By historicair (French original)Flute flute & User:Bibi Saint-Pol (English translation) - Translated in English from French SVG Map_Europe_alliances_1914-fr.svg, CC BY-SA 2.5, <https://commons.wikimedia.org/w/index.php?curid=5702671>

Back

Next

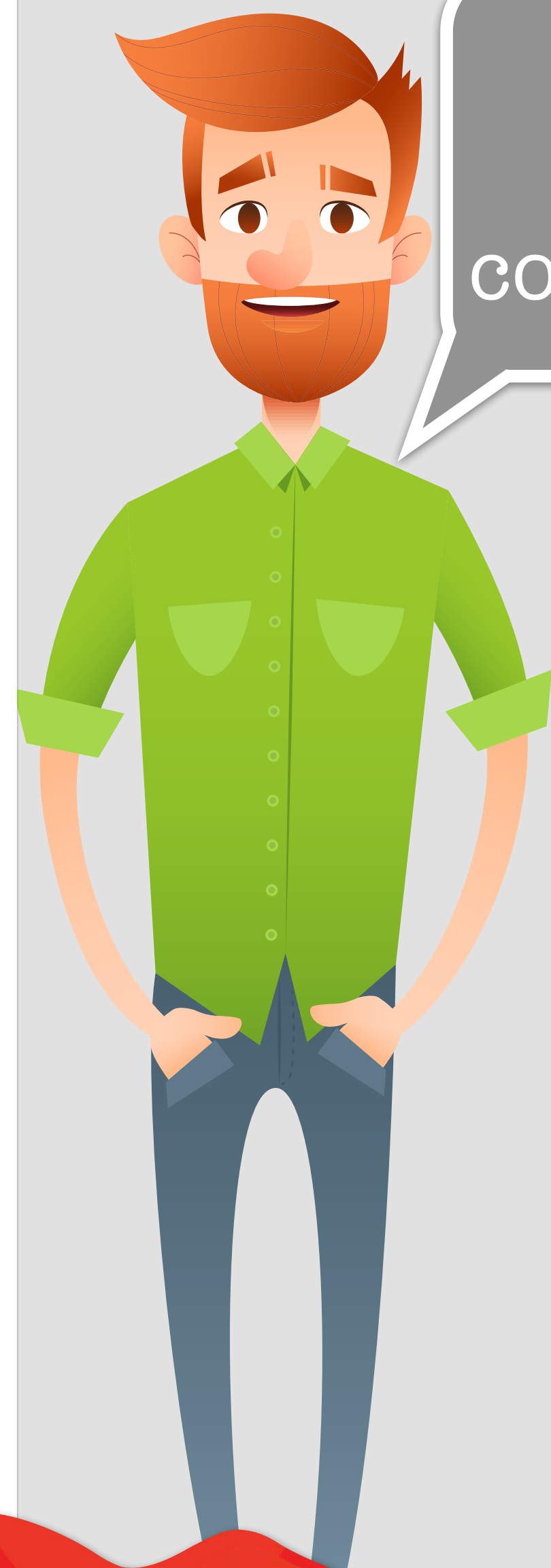
Two main alliances formed between the countries. The Triple Entente was formed between France, Britain and Russia. The Triple Alliance was formed between Germany, Austria-Hungary and Italy.



By historicaire (French original)Flute flute & User:Bibi Saint-Pol (English translation) - Translated in English from French SVG Map_Europe_alliances_1914-fr.svg, CC BY-SA 2.5, <https://commons.wikimedia.org/w/index.php?curid=5702671>

Back

Next



These alliances were formed to help protect the countries from threats and attacks. If one country was under threat, the other countries within their alliance had agreed to help and support them.



By historicair (French original)Flute flute & User:Bibi Saint-Pol (English translation) - Translated in English from French SVG Map_Europe_alliances_1914-fr.svg, CC BY-SA 2.5, <https://commons.wikimedia.org/w/index.php?curid=5702671>

Back

Next

Before the war, several countries had powerful empires in Europe, including the British, German, Austro-Hungarian, Russian and Ottoman empires.



By historicaire (French original)Flute flute & User:Bibi Saint-Pol (English translation) - Translated in English from French SVG Map_Europe_alliances_1914-fr.svg, CC BY-SA 2.5, <https://commons.wikimedia.org/w/index.php?curid=5702671>

Much of the tension between countries came from the desire to gain power and make their empires bigger. Germany was building a powerful navy to rival the one Britain had. Also the people ruled by these empires wanted independence, such as the Bosnian people within the Austro-Hungarian empire.

Back

Next

On 28th June 1914, on a trip to Sarajevo in the Bosnian area of the empire, the heir to the Austro-Hungarian throne, Archduke Franz Ferdinand and his wife were assassinated by a Serbian assassin.



Serbia supported the Bosnian desire to gain independence and helped recruit the assassins and plan the attack on the empire. Many historians refer to this event as the shots that began the First World War.



Back

Next

The Austro-Hungarian empire was sure of the Serbian government's involvement in the assassination of their heir and, with the support of their ally Germany, declared war on Serbia a month later on 28th July 1914.



Within a week, Russia had mobilised its military to defend Serbia. Honouring their alliance with Austria-Hungary, Germany declared war on Russia in order to help and protect their allies.



Back

... declared war on ...

... moved to defend ...

Next

France's alliance with Russia in the Triple Entente meant that they began mobilising their military to help Russia. In response Germany declared war on France on 3rd August 1914. This was the beginning of the Great War.

→
... declared war on ...

→
... moved to defend ...



Although they were part of an alliance with Germany and Austria-Hungary, Italy remained neutral (not on either side) at this point. Their agreement was to come to aid a defence, not helping with an attack.



Back

Next

In an attempt to bypass France's forces on the border between France and Germany, the German armies cut through Belgium (another neutral country). Many Belgians were killed or forced to flee their homes as the Germans invaded.

➡
... declared war on ...

➡
... invaded ...



Britain was extremely unhappy with Germany's invasion of a neutral country. They declared war on Germany on 4th August 1914 and came to the aid of their allies in the Triple Entente.



Back

Next

Over the next four years many other countries would join, or leave the war. As the war developed, and more countries joined either side, the Triple Alliance became known as the Central Powers and the Triple Entente was known as the Allied Powers.



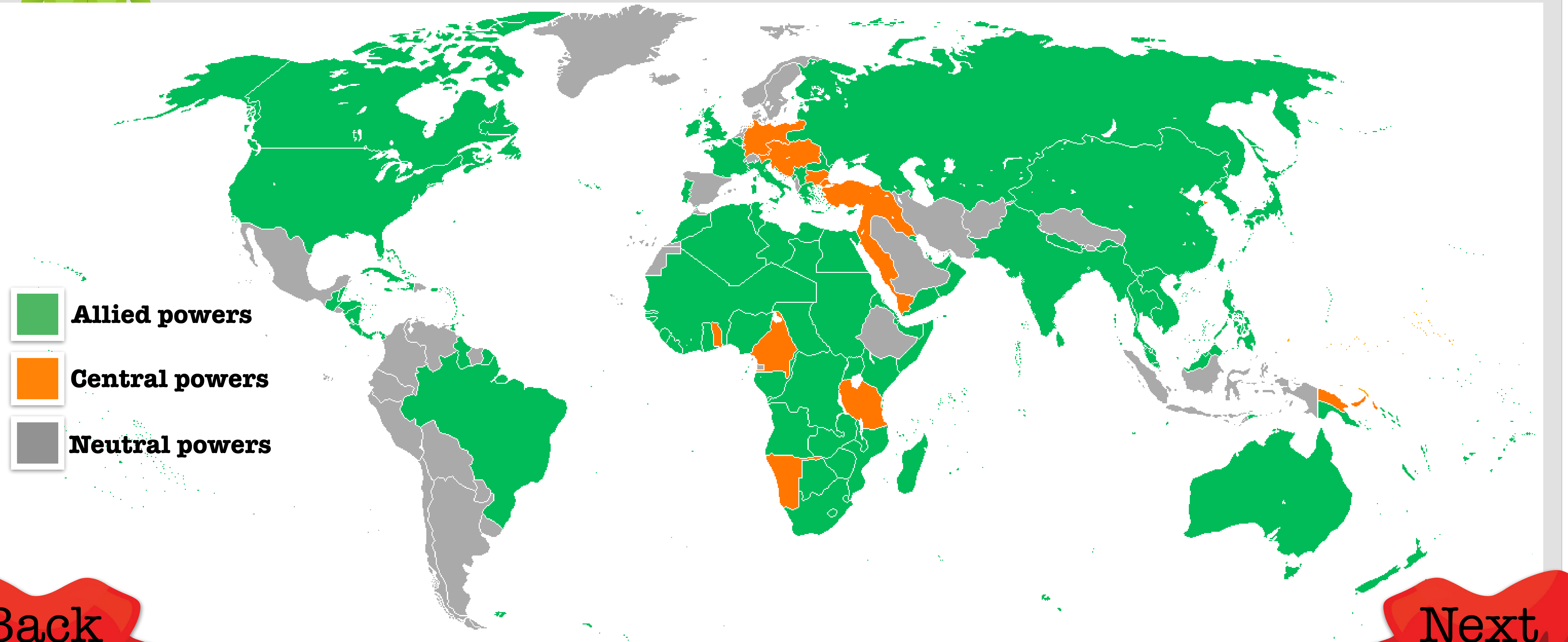
28 th October 1914	The Ottoman Empire attacks Russia, assisting the Central Powers and joining the war.
23 rd August 1914	Japan declares war on Germany.
23 rd May 1915	Italy declares war on Austria-Hungary and joins the Allied Powers.
14 th October 1915	Bulgaria declares war on Serbia, joining the Central Powers.
9 th March 1916	Germany declares war on Portugal .
6 th April 1917	The USA declares war on Germany.
29 th June 1917	Greece declares war on the Central Powers.
14 th August 1917	China declares war on Germany and Austria-Hungary.
9 th December 1917	Russia leaves the war and agrees to stop fighting with Germany.
26 th October 1917	Brazil declares war on Germany.

Back

Next



This map shows the participants of WWI.
What can you learn from this map?



Back

Next

Think, pair, share...

What do you think was the main reason that the war began?

Austria's Archduke Franz Ferdinand was assassinated by a Serbian.

France and Russia were allies so Germany felt threatened on two sides.

Germany wanted a navy as big and powerful as Britain's navy.

The empires in Europe wanted to become bigger and more powerful.

Wary of Germany's growing power, Britain builds more warships.

Pre-arranged alliances meant that Europe was already divided into two sides.



Back