

# Art Illusions

Learning Objective:

To explore how artists use foreshortening to create perspective.





Why is one of this superhero's hands so much bigger than the other?



This technique is  
known as  
foreshortening.

Artists use  
foreshortening when  
they want to create  
the illusion that the  
person or object is  
coming straight  
towards you.

Making the  
hand larger than  
the other, and the  
head, gives the  
impression it is closer  
to the viewer.





Have a look at  
the photos on the slides.  
How has the angle of the  
camera affected the proportions  
and what effect does this  
have?







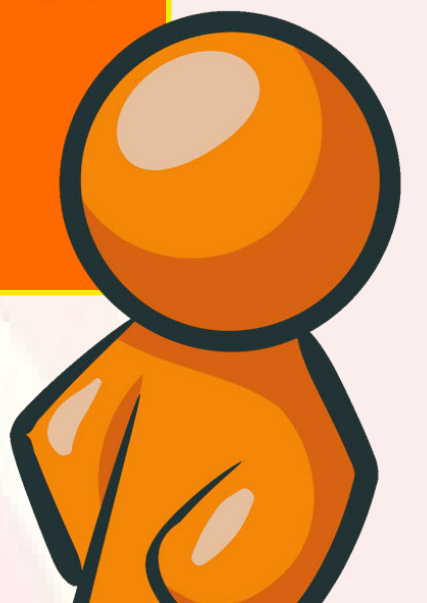


“The lamentation over the dead Christ” Andrea Mantegna, c. 1475



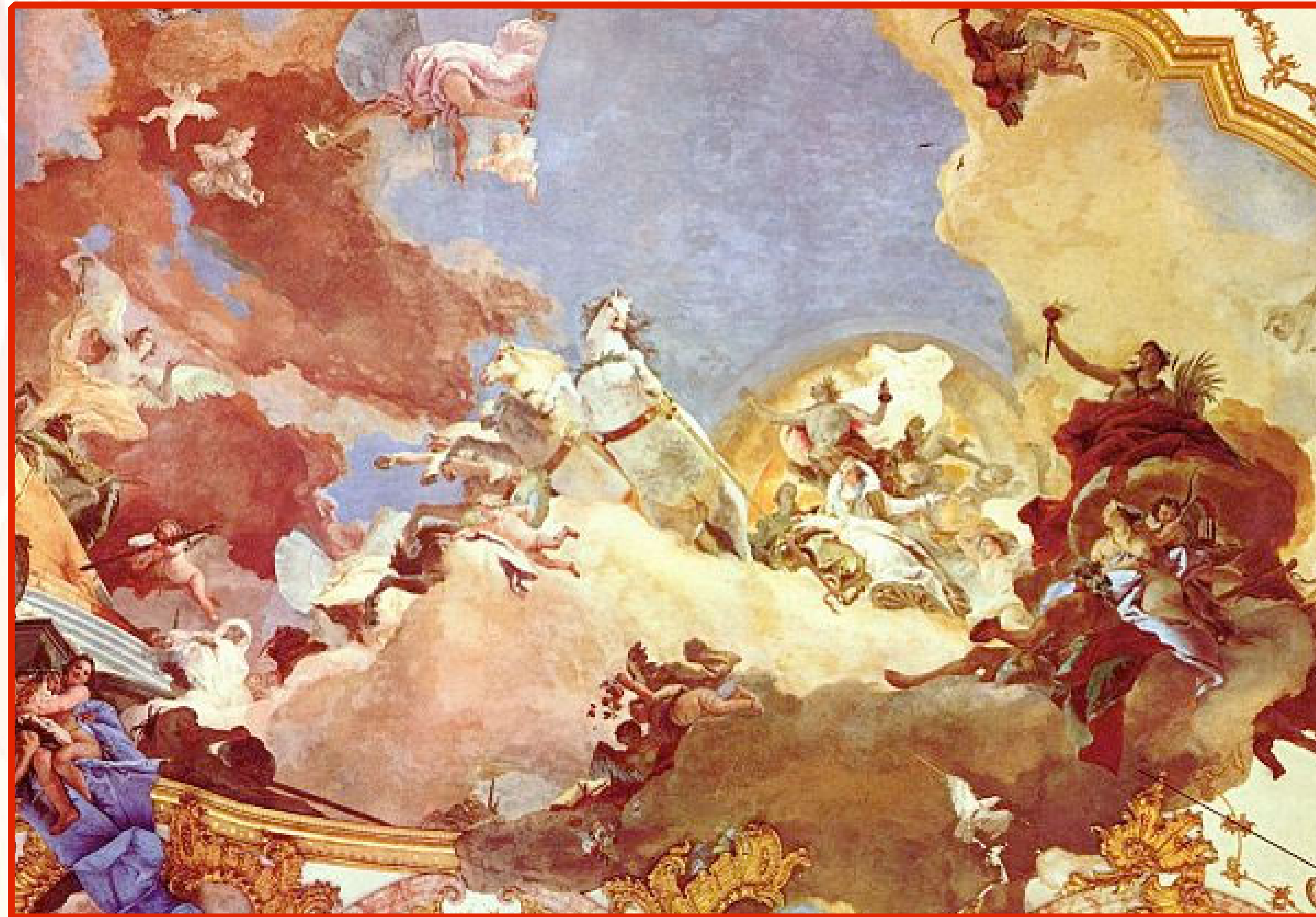
Artists have been using foreshortening for hundreds of years. This painting shows people mourning the death of Jesus.

Can you see how the artist has made Jesus' body much shorter than it actually was to give the illusion he is lying down?





Ceiling fresco by Giovanni Battista Tiepolo, 1751



Have a look at the horses in this picture.  
How has the artist used foreshortening?



The idea of foreshortening is really the same idea as the linear perspective we have already looked at. Think vanishing point!

Using a triangle is very helpful if you are drawing a character like a superhero. This helps you locate the vanishing point and keeps all the body parts in proportion.

